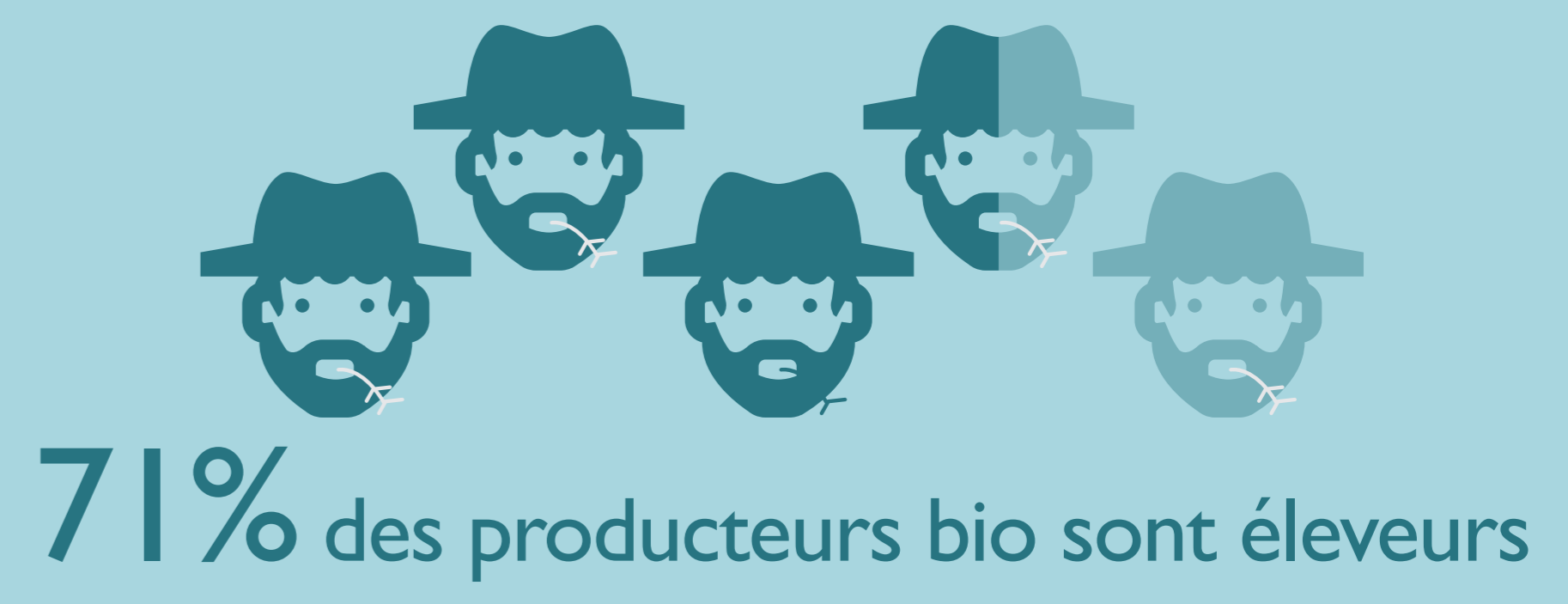


# L'agriculture biologique wallonne



**1742** producteurs bio

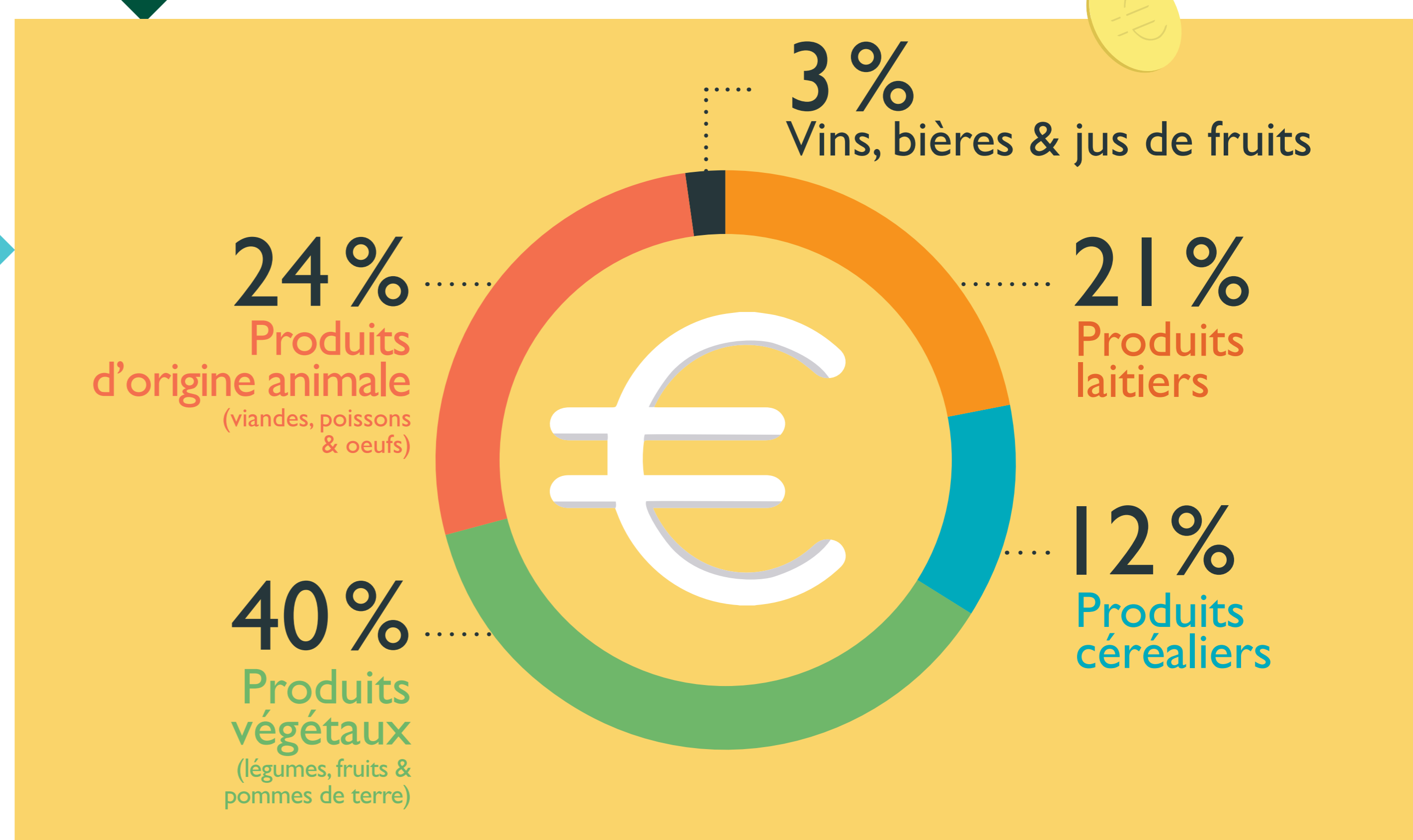
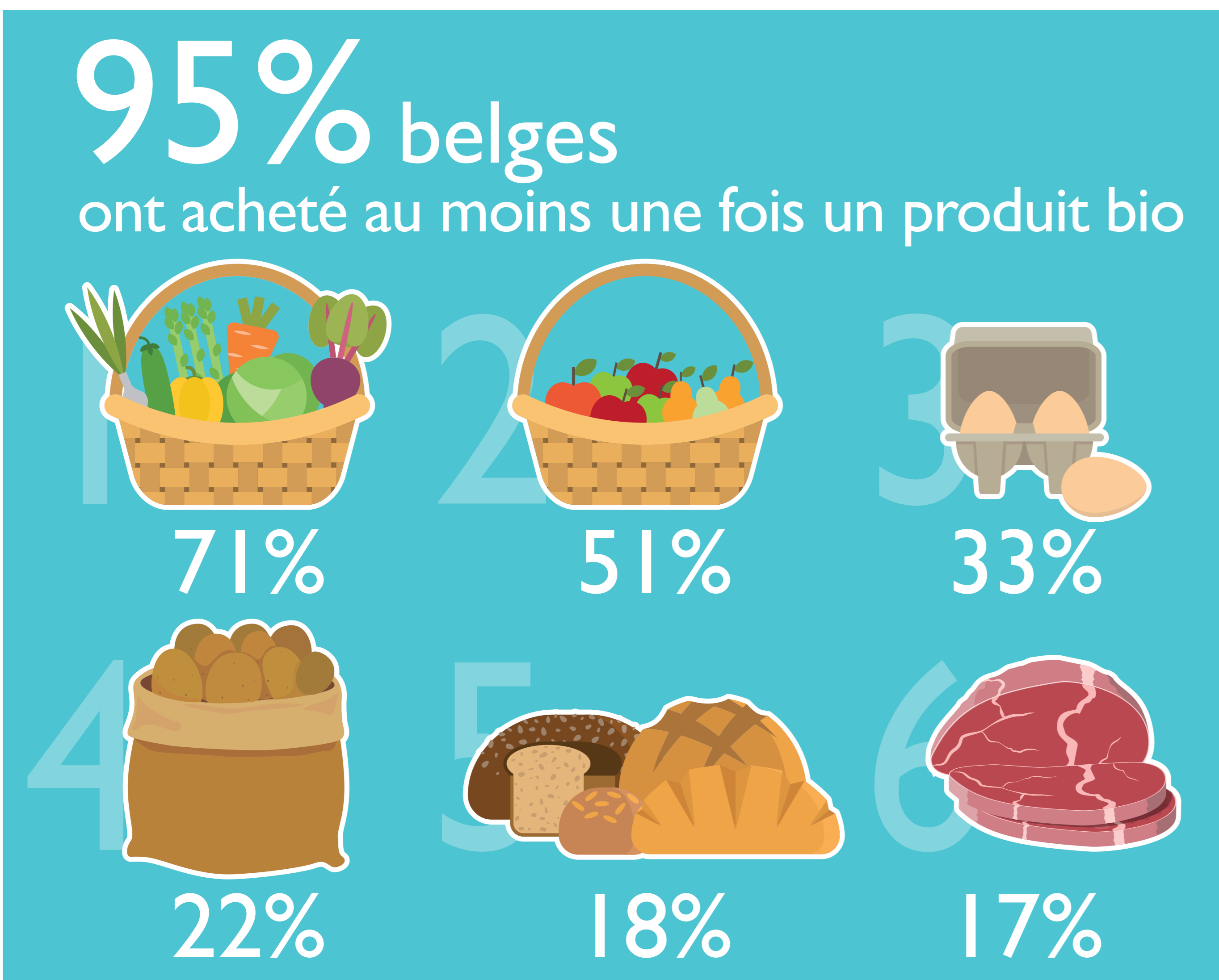
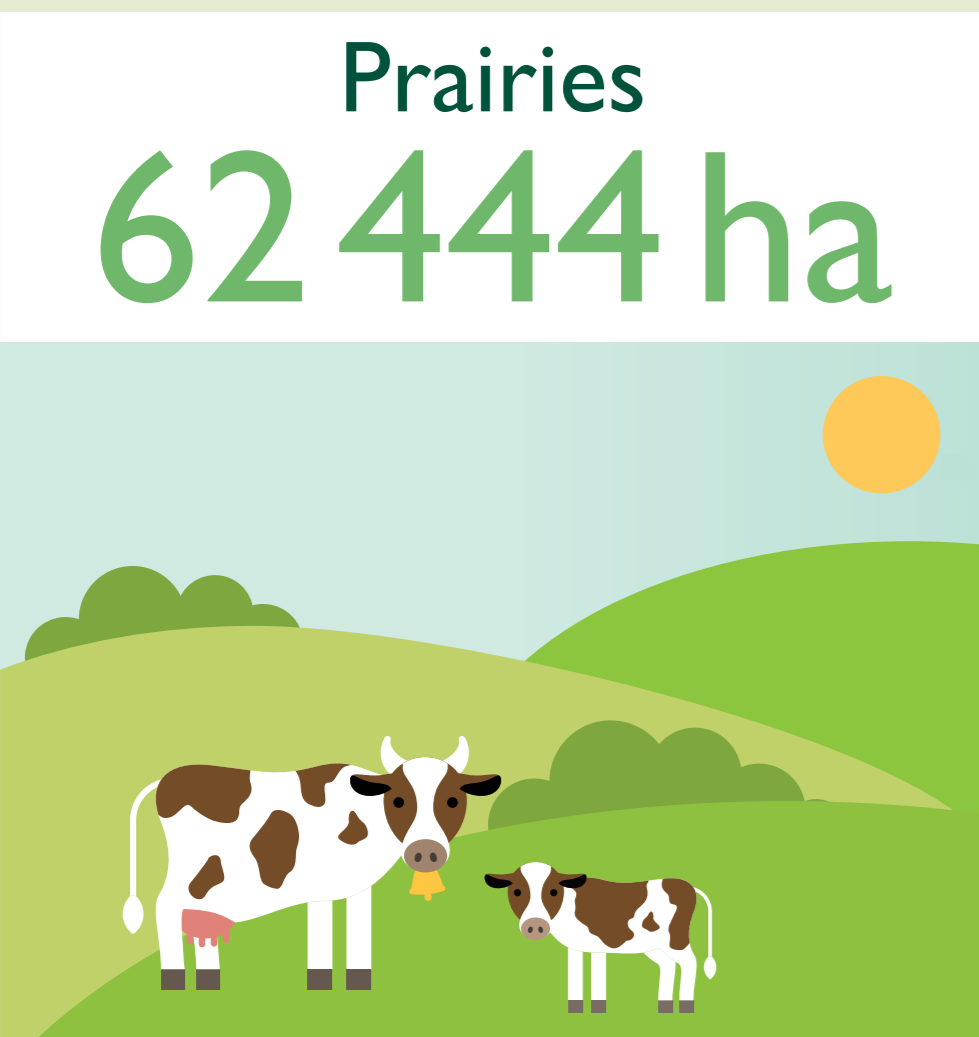
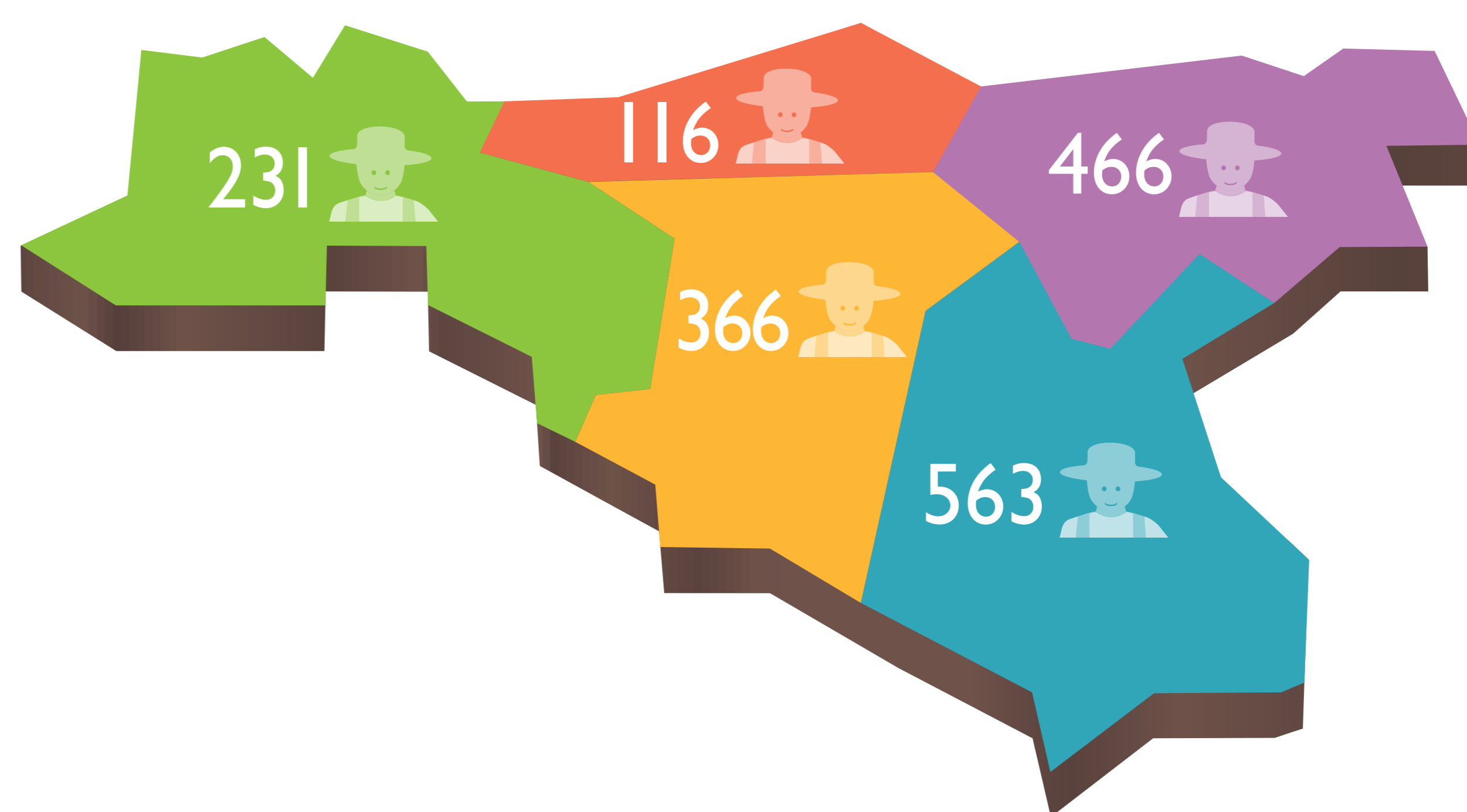
(soit 1/7 des producteurs)



**81 087 ha**

surface agricole utile sous contrôle Bio en Wallonie (soit 11% de la surface agricole utile en Wallonie)

**46,6 ha** surface agricole moyenne d'une ferme bio



Pour consommer bio & local  
**biomonchoix.be**

